

The 3rd Basic Survey on Early Childhood Education and Care in Japan

The environment surrounding childcare facilities is changing; declining birthrate, change in families including growing numbers of double income families with young child(ren), a revision of course of study/guidelines and free early childhood education and care.

A survey was conducted on the actual circumstances/issues of childcare facilities in kindergartens, daycare centers and certified ECEC centers in the same framework, in cooperation with their principals.

This paper introduces survey data to aid understanding of the current circumstances of childcare in transition.



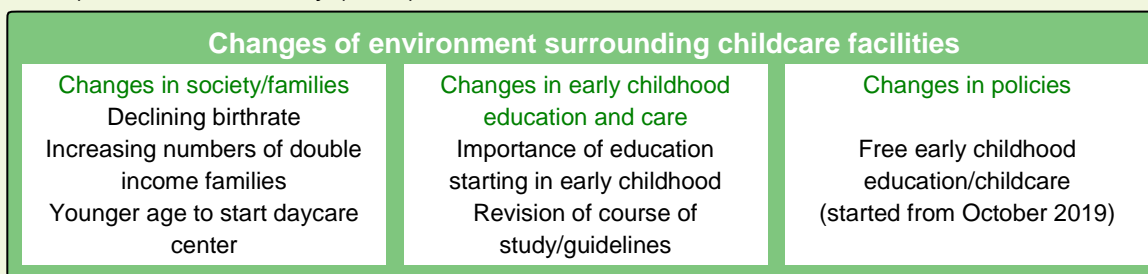
About the survey		2
Chapter 1	Environment/structure	
1	Opening hours of childcare facilities	4
2	Standard childcare hours at childcare facilities	5
3	Capacity fill-rate (0- to 2-year olds/daycare center, certified ECEC center)	6
4	Capacity fill-rate (3- to 5-year olds)	7
5	Benefits/good-design in management of certified ECEC centers	8
6	Lunch during standard childcare hours at childcare facilities	9
7	Circumstances of children with special needs	10
8	IT environment at childcare facilities	11
9	Circumstances of teachers/caregivers	12
Chapter 2	Goal of education/childcare and actual activities	
1	Goal and instruction planning of education/childcare at childcare facilities	13
2	Response to course of study/guidelines	14
3	Communication/collaboration with elementary schools	15
4	Actual activities during standard childcare hours	16
5	Actual circumstances of extended childcare (kindergartens)	17
6	Actual circumstances of childcare for two-year olds (kindergartens)	18
Chapter 3	Issues in management/improving abilities of teachers/caregivers	
1	Issues in the actual childcare activities/management	19
2	Requirements to improve abilities of teachers/caregivers	20
3	Training required for teachers/caregivers	21
4	Training frequency in and out of the facilities, intention for online training	22
Chapter 4	Support for childrearing	
1	Details/objects for childrearing support activities	23
2	How to comprehend the requests of parents for childcare facilities	24
3	Communication methods to parents	25
Findings from the survey results		26

About the survey

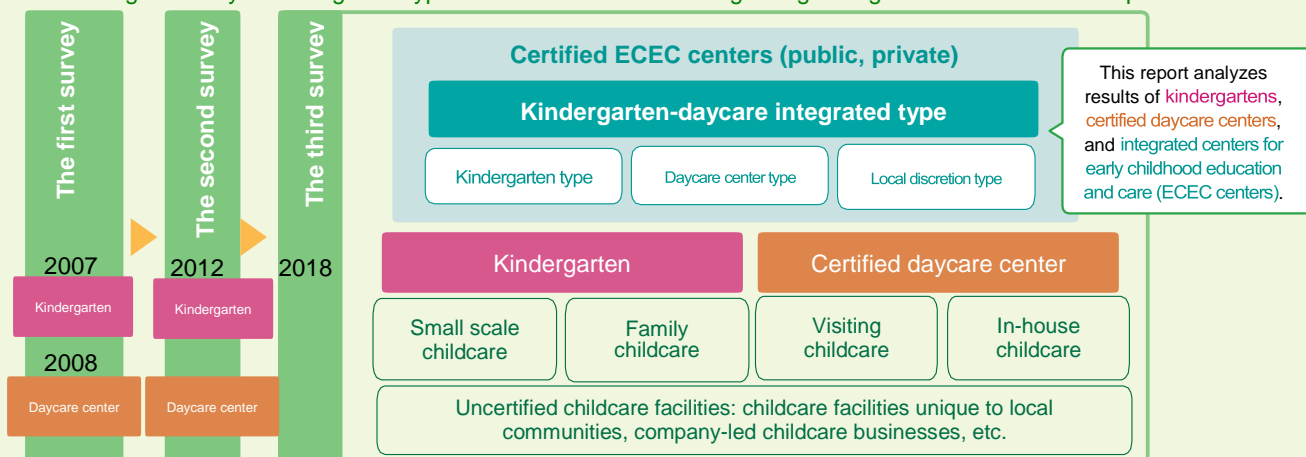
Background and purpose

The role of childcare facilities in providing a growing environment for infants and young children is becoming more and more important in these times of declining birthrate, increasing numbers of double income families with infants and young children, and younger age to start daycare center. The structures of early childhood education and care are becoming more diverse along with changes in society. The importance of nurturing “disposition toward learning, humanity” from early childhood is attracting attention again in integrated education reform from early childhood to the higher educational stage. In 2018, a revision for kindergarten course of study, daycare center guidelines, and kindergarten-daycare integrated type certified ECEC center education course of study (hereinafter referred to as course of study/guidelines) was established.

The purpose of this survey is to identify the actual circumstances and issues in childcare facilities in transition beyond the types of facilities. The survey was conducted nationwide in Japan at kindergartens, daycare centers and certified ECEC centers. The framework allows comparison with the first survey (2007/2008) and second survey (2012).



Measures and issues on early childhood education and care at kindergartens, certified daycare centers and kindergarten-daycare integrated type certified ECEC centers regarding changes of environment and policies



Outline of the survey

Themes: Environment/structure of the facility, educational/childcare activities, actual circumstances/awareness of facility principals concerning childrearing support activities, etc.

Subjects: Principals, directors, facility chiefs, vice principals, vice directors, vice facility chiefs, supervisors, etc. of public and private kindergartens, public and private certified daycare centers, public and private kindergarten-daycare integrated type certified ECEC centers with 30 or more children

Method of the survey: By mail (questionnaires for written answers are mailed out and collected)

Period: November - December 2018

Area of the survey: Nationwide in Japan

Number of questionnaires sent: 16,037. Valid responses: 4,565 (valid response rate 28.5%)

Items of the survey: Environment and equipment, circumstances of teachers/caregivers, goal of education or childcare, response to course of study/guidelines, educational and childcare activities, support for child rearing, professional development, connection between childcare facilities and elementary schools, issues in management of the childcare facilities, communication with parents, etc.

Basic attributes

Number of valid responses and type of childcare facilities

		The first survey 2007 (survey on kindergartens) 2008 (survey on daycare centers)	The second survey 2012	The third survey 2018
		Number of valid responses (ratio of public and private)		
Kindergarten	Public	401 (25.0%)	456 (33.1%)	606 (40.6%)
	Private	1,203 (75.0%)	921 (66.9%)	888 (59.4%)
	Total	1,604	1,377	1,494
Daycare center	Public	1,540 (51.0%)	1,362 (36.8%)	840 (36.2%)
	Private	1,478 (49.0%)	2,343 (63.2%)	1,481 (63.8%)
	Total	3,018	3,705	2,321
Certified ECEC center	Public	-	-	148 (19.7%)
	Private	-	-	602 (80.3%)
	Total	-	-	750

Position of respondents (2018)

(%)

	Kindergarten		Daycare center		Certified ECEC center	
	Public	Private	Public	Private	Public	Private
Principal, director, facility chief	75.7	72.9	87.5	76.4	82.4	66.3
Vice principal, vice director, vice facility chief	16.0	13.9	4.4	5.4	10.1	16.9
Supervisor	5.1	8.3	6.1	13.0	6.1	10.5
Others	2.0	2.6	0.5	2.6	0.7	3.8
No response/unknown	1.2	2.4	1.5	2.6	0.7	2.5

Notes concerning the data

- This report analyzes mainly the third survey (2018) divided by the type of the facility, public/private.
- Please refer to the reports disclosed on the website of Benesse Educational Research & Development Institute for details of the first and the second surveys.
- As for the certified ECEC centers, the objects of the survey are public and private kindergarten-daycare integrated type certified ECEC centers. In this report, they will be referred to as “public and private certified ECEC centers.”
- As for the types, publicly established and publicly operated facilities are categorized as “public,” while publicly established and privately operated facilities and privately established and privately operated facilities are categorized as “private.”
- Percentages (%) used in this report are computed following the computing method of each item and are shown as numbers with the second decimal place rounded. Therefore, the total may not be exactly 100.
- Figures/tables in parentheses () indicate the numbers of objects for analysis.